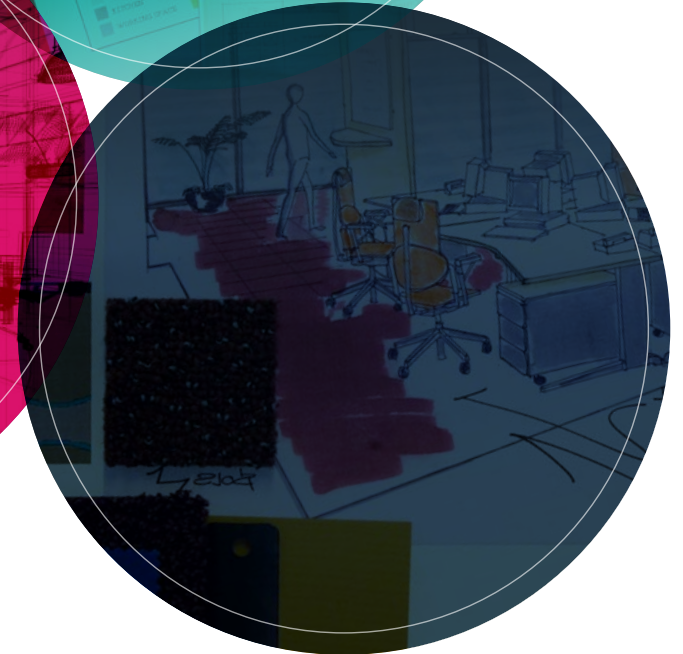




**BNP PARIBAS  
REAL ESTATE**

 [CLICK HERE](#)



## PROJECT SOLUTIONS



“ In times of change, the greatest danger is not the change itself, but rather the use of outdated logistics. ”

Peter Drucker

## KEY FIGURES 2020



**16** TEAM MEMBERS  
comprising architects and interior designers

approx.

**55** PROJECTS per year



over

**100** YEARS  
of combined professional experience



**6** LOCATIONS  
in Germany



**617,000** m<sup>2</sup> of SPACE  
planned and realised





## 1 OUR APPROACH

Our Project Solutions business unit offers customer-specific planning and project management services throughout Germany.

**O**ur team provides full-service support – from strategy and concept development through design and planning to relocation management and supervision of staff during the change process.

Together with our real estate experts, we assess your company's future needs and requirements on the basis of a comprehensive analysis of your premises and work practices.

Our all-embracing approach focuses on your staff in the context of your premises, technology and corporate culture in order to evolve the appropriate work environment for your needs.

In close cooperation with you we develop the concept, the corresponding office planning, the workplace design and realise the corresponding environment at your property. We place our extensive experience at your

disposal in all matters relating to modern workplace concepts, furnishings and space optimisation.

In this change process, we provide your staff with comprehensive and ongoing support to ensure that they are ideally prepared for the new work practices and their new work environment.



## 2 OUR SERVICES

### A ANALYSIS & STRATEGY

- Analysis of job profiles and identification of requirements regarding space, rooms, technology and corporate culture
- Drafting and development of a corporate workplace strategy
- Change management: Supervision of the change process at your company
- Revitalisation and enhancement concepts, feasibility assessment for your real estate
- Determining the areas at your property in accordance with GIF or DIN, efficiency comparisons by reference to space analyses



### B CONCEPT, PLANNING & DESIGN

- Development of individual concepts which reflect the culture at your company, accord due consideration to your employees' needs and are tailored ideally to your property
- Individual design concept in line with your corporate culture
- Tailor-made model layouts and tenant fit-out planning
- Digitisation of plans based on as-built drawings (on-site measurements as appropriate)
- Translation of the design concept into an integral interior design, using photomontages, mood boards and visualisations
- Detailed planning and selection of special furnishings



## 2 OUR SERVICES

### PROJECT MANAGEMENT

- Representation of your interests throughout the planning and construction process in collaboration with a network of specialised planners (heating, ventilation and sanitation, lighting, acoustics, media installations, etc.)
- Continual monitoring of the project budget, the time schedule and quality up to commissioning of the premises
- Support with tendering and awarding contracts
- Supervision of the various parties involved in the project and specialist planners in the interior finishing process
- Relocation management (situation analysis, relocation and occupancy planning, soliciting offers from removal firms, on-site and subsequent support)



### 3 OUR CONTACT

## Stefanie EISENBARTH

### HEAD OF PROJECT SOLUTIONS

Maximilianstrasse 35, Haus C /  
Eingang Herzog-Rudolf-Strasse  
80539 Munich

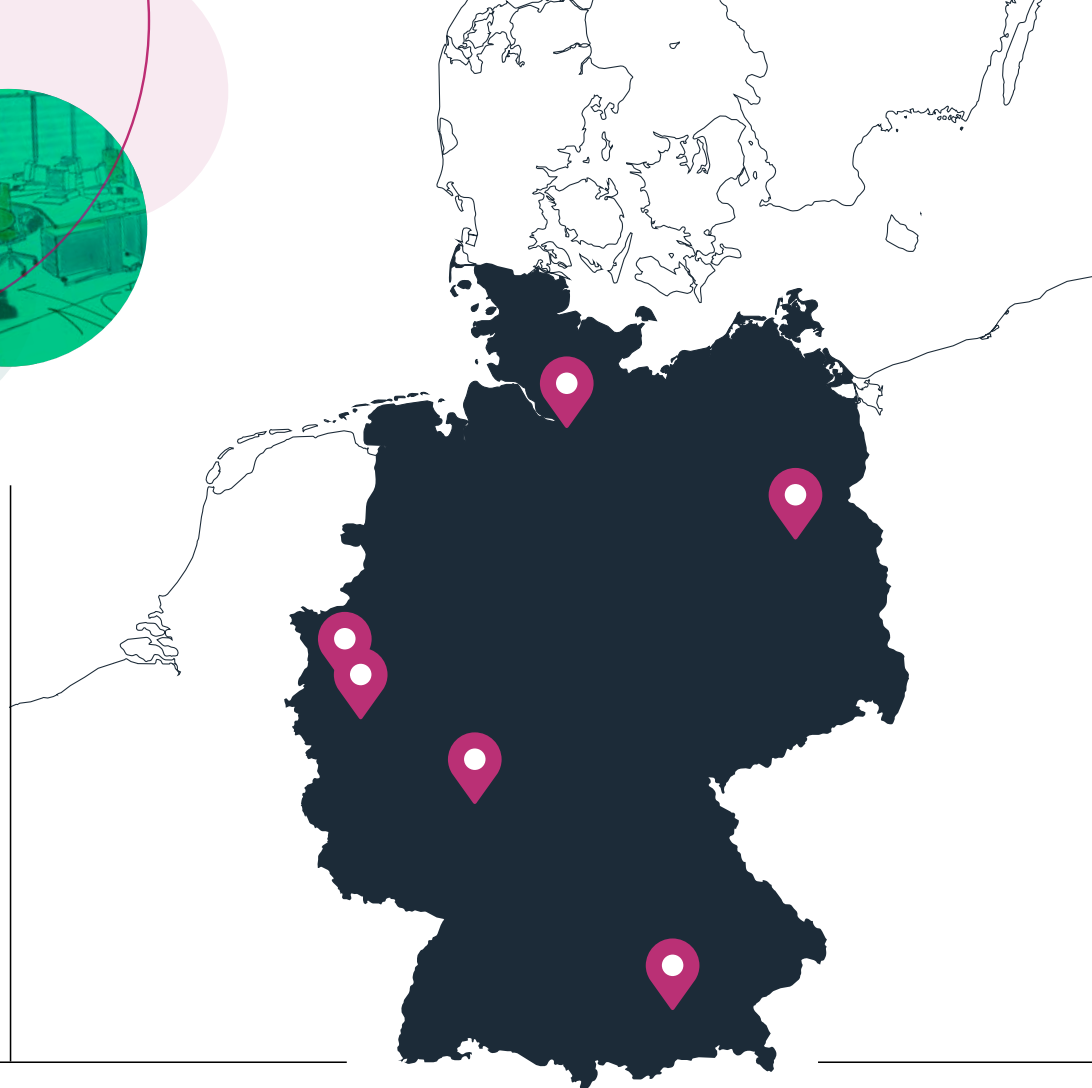
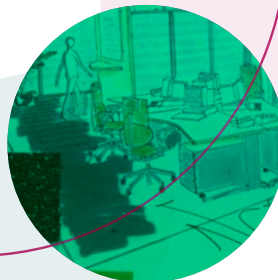
Phone: +49 (0)89-55 23 00-480

Mobile: +49 (0)173-724 35 09

[stefanie.eisenbarth@bnpparibas.com](mailto:stefanie.eisenbarth@bnpparibas.com)



**BNP PARIBAS  
REAL ESTATE**



10719 **BERLIN**

KRANZLER ECK BERLIN  
Kurfürstendamm 22

50670 **COLOGNE**

THE CORNER  
Im Klapperhof 3-5

40213 **DÜSSELDORF**

KÖ-QUARTIER  
Breite Strasse 22

60311 **FRANKFURT AM MAIN**

Goetheplatz 4

20354 **HAMBURG**

Hohe Bleichen 12

KEEP UP-TO-DATE WITH BNP PARIBAS REAL ESTATE'S NEWS,  
WHEREVER YOU ARE

# #BEYONDBUILDINGS



Publisher and copyright: BNP Paribas Real Estate  
Photography: Cover ©Suwatchai - stock.adobe.com, ©Rawpixel.com - Fotolia • Inside pages  
©peshkova - stock.adobe.com, ©Vincent FILLON, ©Christian Hillebrand - stock.adobe.com,  
©by Dariusz T. Oczkiewicz, ©HGEsch Photography  
Status March 2021